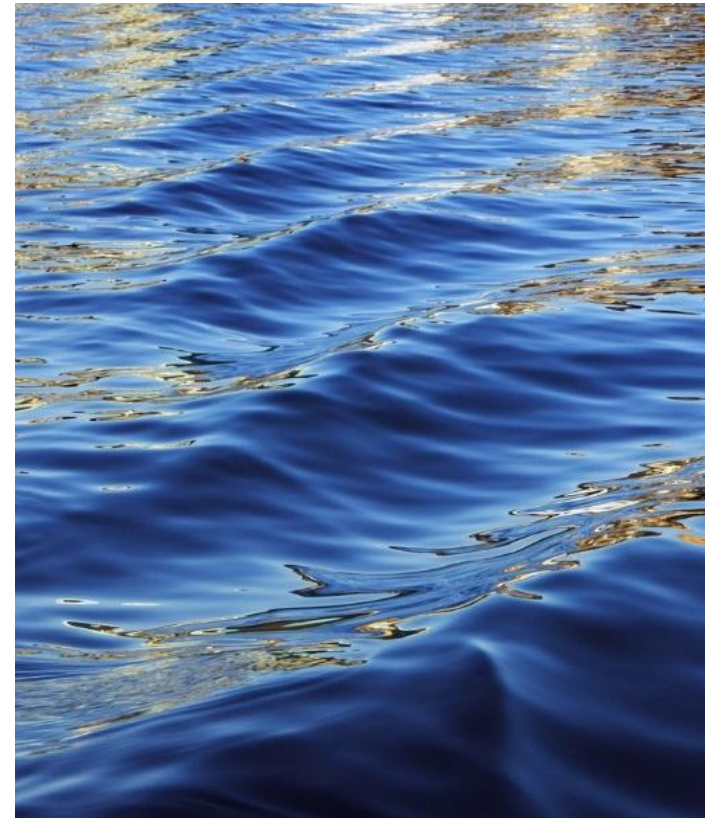


Creation Care @ Camp Caroline

Shoreline Protection Project Final 3/12/2024

Protecting our shoreline with help from the
North Carolina Coastal Federation and the
North Carolina Wildlife Federation



What
Would a
Living
Shoreline
Look
Like at
Camp
Caroline?



Initial Proposal



As Modified

What will the Shoreline Look Like at Camp Caroline?

- 305 ft of Living Shoreline
- 3700 ft² Vegetated Buffer

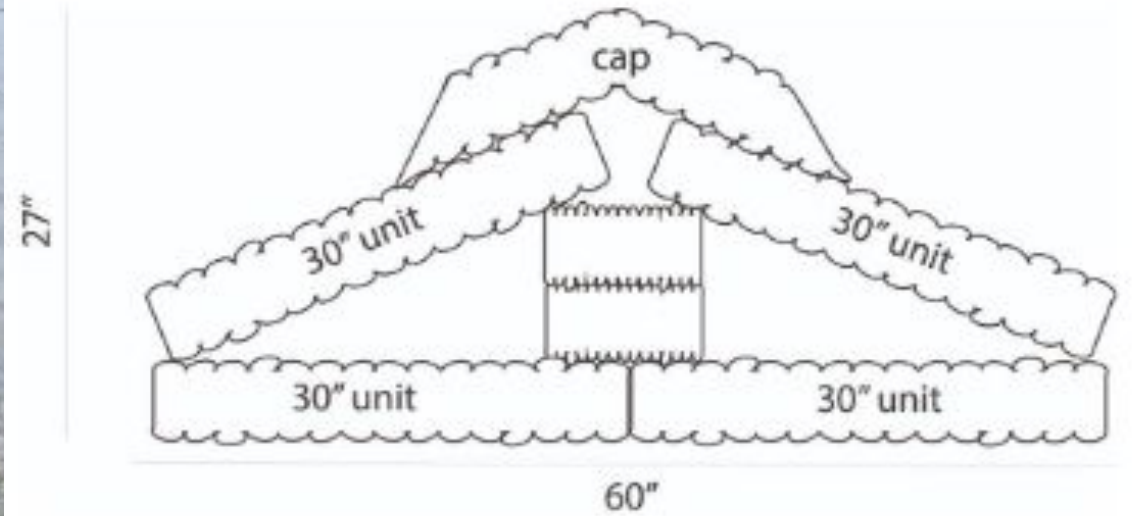


Living Shoreline and Planting Design

AS PERMITTED by CAMA

- 60" base width
- 27" centerline height
- 5' planting buffer

27" x 60"



The 27" x 60" QuickReef® sill adds our cap unit to the 21" x 60" sill. These caps provide the ability to attenuate greater wave and wake energy, and they increase the sill height to 27". This structure can be installed in water that is 15" to 30" deep at MHW/NHW.

305 ft of
Living
Shoreline

= 30"
Units +
Caps

- 3700 ft²
Vegetated
Buffer

“Spartina
Patens”

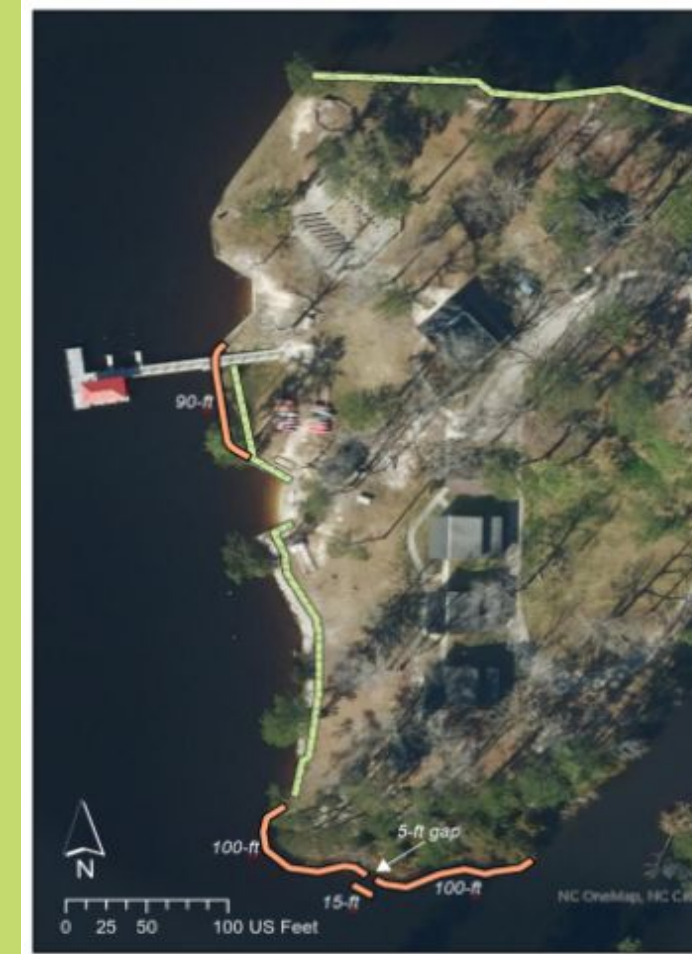


Spartina patens | Beds of Spartina patens, in the high marsh... | Flickr

Shoreline Protection Final Budget – Part I

LIVING SHORELINE: 305 feet

305 ft QuickReef Offshore Sill & Installation	\$65,102
Less NCLWF Cost-Share (Carolina Coastal Federation)	-\$16,775
Less North Carolina Wildlife Federation EEG grant	<u>-\$16,775</u>
TOTAL GRANT FUNDING COMMITTED	-\$33,550
LIVING SHORELINE COST	\$31,552



Shoreline Protection Final Budget – Part II

VEGETATED BUFFER MATERIALS & INSTALLATION

Approx. 3,700 ft² (740 ft x 5 ft) - \$11,544

Less NCCF Grant (50%) -\$ 5,772

VEGETATED BUFFER TOTAL COST \$ 5,772



Shoreline Protection Final – Total

LIVING SHORELINE COST	\$31,552
VEGETATED BUFFER COST <i>(Including Professional Installation)</i>	<u>\$ 5,772</u>
TOTAL SHORELINE PROTECTION COST (After \$39,322 in Grant Funding)	\$37,324



* Donor Funds Received: \$38,250 (as of 3/12/2024)

* Balance of funds to be used to mark Buffer boundary.